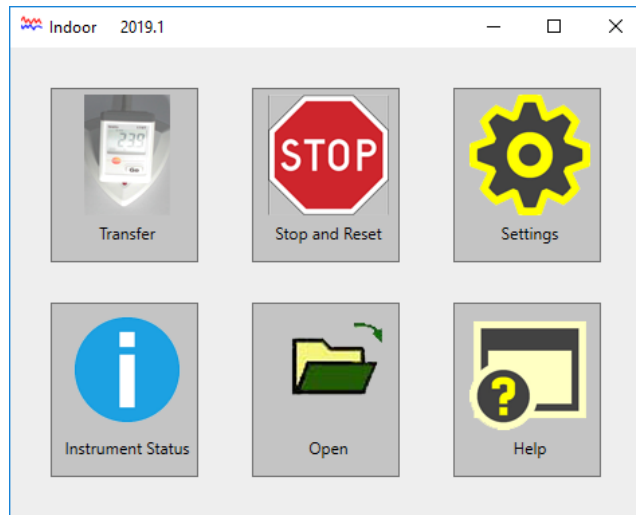


The Indoor software package can be used to transfer measured data from the following Testo loggers **174T**, **174H**, **175T1**, **175T2** and **175H1**. Also supported is the **176T4** logger. The software package makes it easy to create line charts based on measured data, with different start and end dates. All charts will display maximum, minimum and average for the selected period.

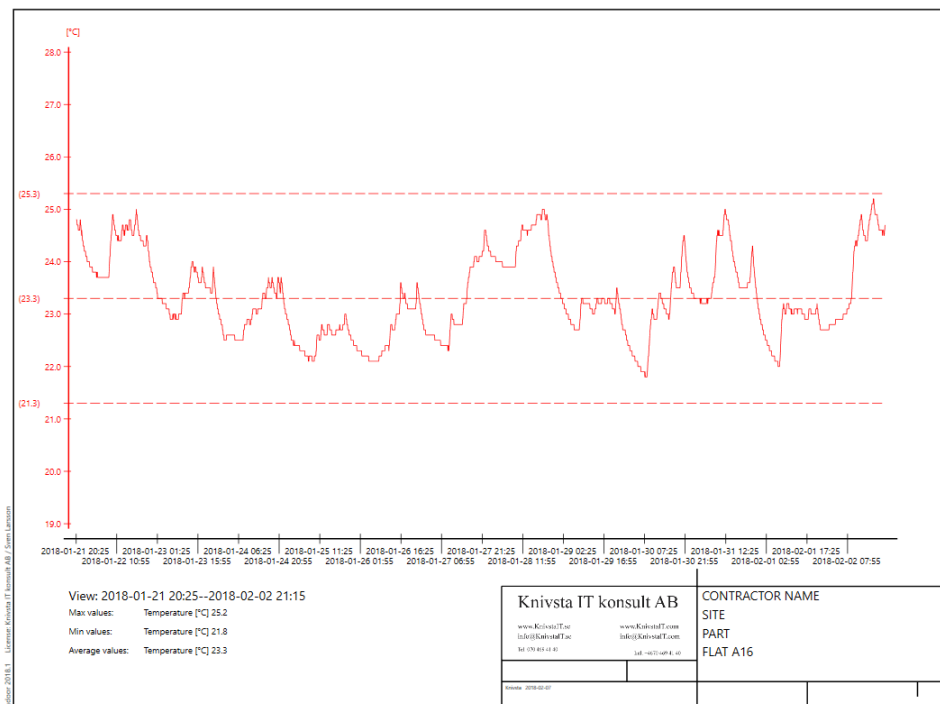
## 1. Indoor, main window:



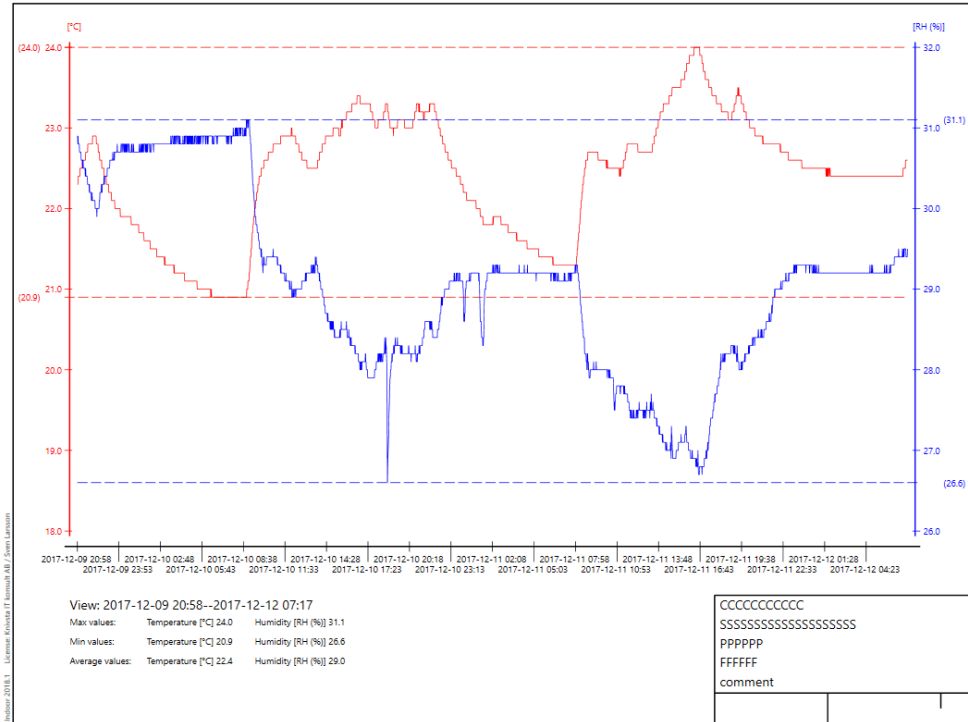
The essential parts of the Indoor program suite are:

- Indoor – mainly used in connection with the Testo loggers.
- IndoorDrawing – used to create charts. See examples below.
- IndoorExcel – used to create charts, requires Microsoft Excel to be installed. See example below.

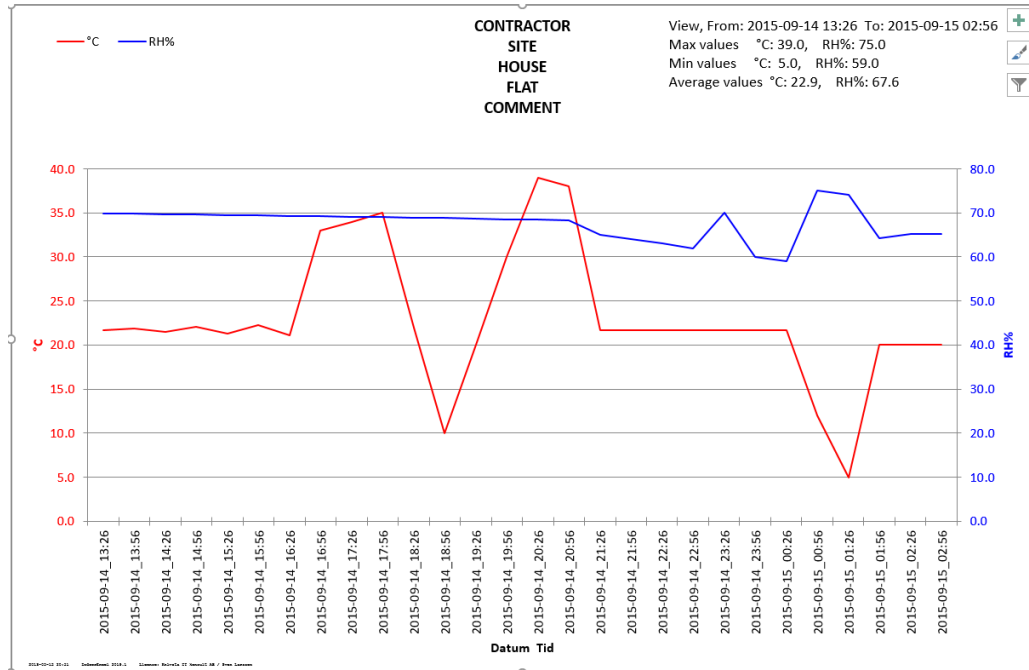
## 2. Example, IndoorDrawing: line chart from Testo 174T, with a wide drawing label including company logotype. Also including plotted lines for average temperature and average temperature $\pm 2.0$ degrees.



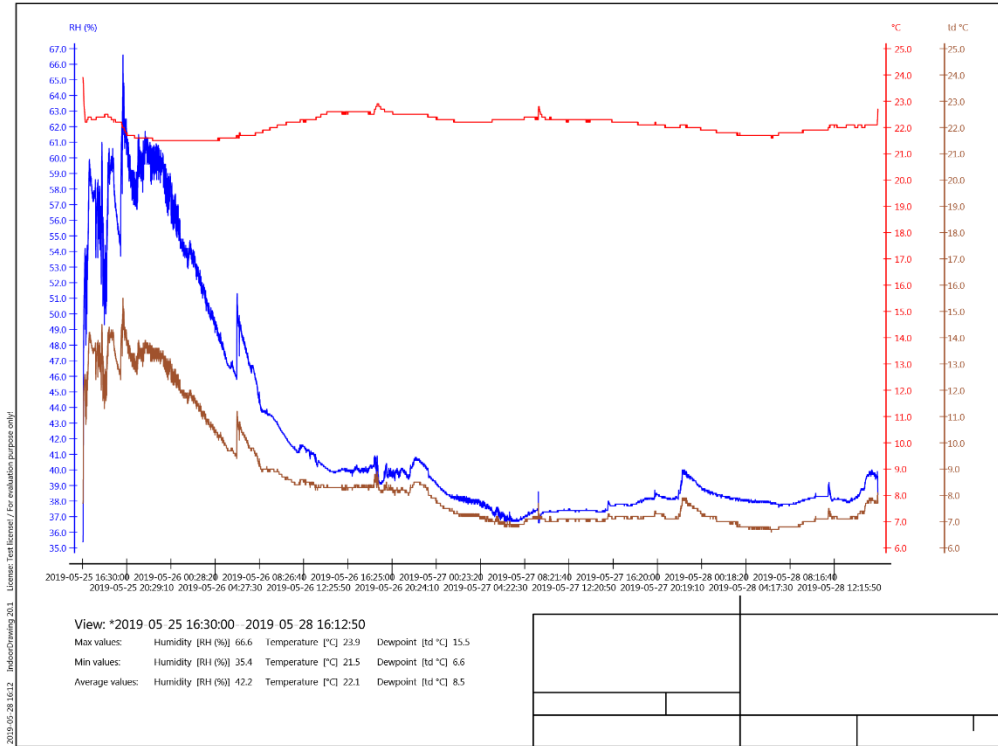
- 3. **IndoorDrawing:** line chart from Testo 174H, with medium wide drawing label. Including plotted lines for max and min temperature and also max and min humidity.



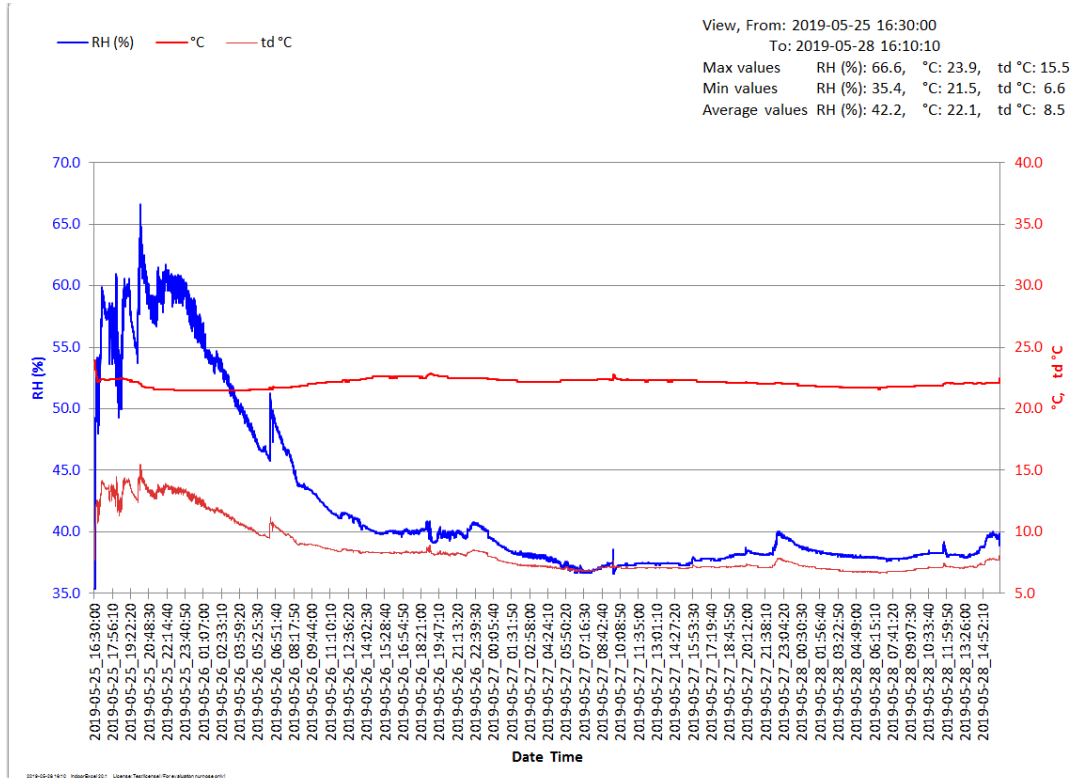
- 4. **Example, IndoorExcel:** Line chart from Testo 174H, using functions added to Microsoft Excel to draw the chart (Microsoft Excel required).



**5. IndoorDrawing: Testo 175H1 example. Including absolute humidity.**



**6. IndoorExcel: Testo 175H1 chart example.**



---

## 7. System requirements

- A Testo USB docking station.
- Microsoft Windows\* 7 Service Pack 1, or later.
- Using Microsoft Excel for the charts requires Excel version 2010 or later (tested are 32-bit versions of Excel 2010, 2013, 2016 and Office 365 [both 32 and 64 bit]).
- At least one free USB port (for logger connection).
- Administrator privileges required during installation.
- Third parts program: Testo ComSoft\* 5 (can be downloaded from [www.testo.com](http://www.testo.com)). If missing it can be installed automatically during the Indoor installation.
- Microsoft framework .NET 4.7.1 or later. If it is missing then it will be automatically installed when starting Indoor the first time.
- A pdf reader is required for reading the help files.

---

## 8. System recommendations

- Microsoft Windows 10.
- Microsoft Excel 2016, or later (32-bit version – the most common version).
- At least 500 Mb free space on disk for storage of measurement data.

---

## 9. Evaluation license

The Indoor software suite is delivered with an evaluation license valid for a limited time.

Please verify that Indoor is fully usable in your environment and is what you need before acquiring a permanent license.

---

\*) Registered trademarks, see [www.microsoft.com](http://www.microsoft.com), [www.testo.com](http://www.testo.com).

**For more information, please contact:**

**Knivsta IT konsult AB**  
**info@knivstait.se**